

# DELAY

IVAN GAILLARD

INTRO

Musical notation for the Intro section, measures 1-4. The key signature has one flat (B-flat), and the time signature is 12/8. The melody consists of eighth and sixteenth notes with accents.

5 (A)

Musical notation for section A, measures 5-7. The melody continues with eighth and sixteenth notes.

8 1. 2.

Musical notation for section A, measures 8-9, including first and second endings. The first ending leads back to measure 5, and the second ending leads to measure 10.

10 (B)

Musical notation for section B, measures 10-12. The melody features eighth notes with accents.

13 1. 2.

Musical notation for section B, measures 13-14, including first and second endings. The second ending has a double underline and an accent.

15 (C) "EMPILER" LES GROUPES DE DJEMBÉS

D1

Musical notation for section C, measures 15-16. The melody consists of eighth notes with accents.

17 D2

*p* *f*

Musical notation for section C, measures 17-18. The melody includes a dynamic change from piano (*p*) to forte (*f*).

19 D3

Musical notation for section C, measures 19-20. The melody continues with eighth notes and accents.

21 D4

Musical notation for section C, measures 21-22. The melody concludes with eighth notes and accents.

2

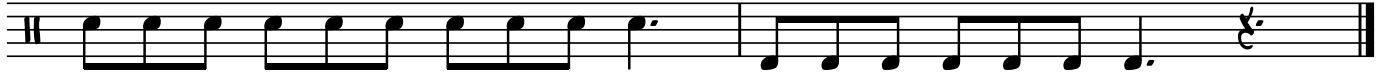


23

PLAY 3 TIMES



25



*PUIS GROUPE 1-2 JOUENT PART A, GROUPE 3-4 JOUENT PART B, SYNCHRONISÉS*

*FINIR PAR REPRISE INTRO*