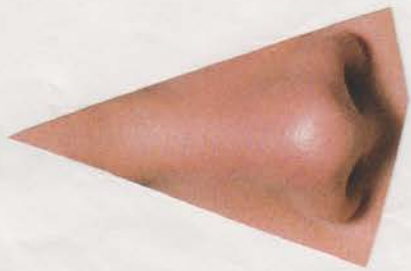
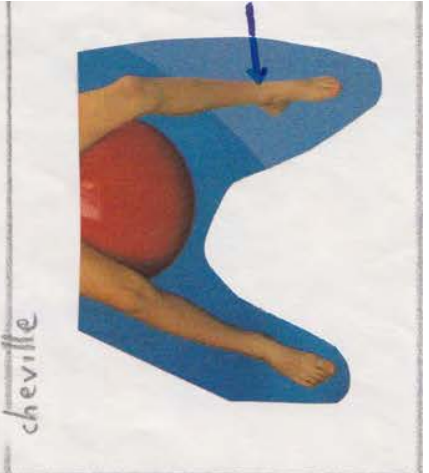
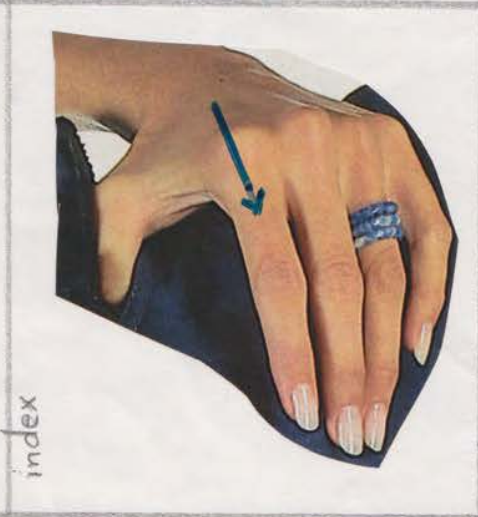
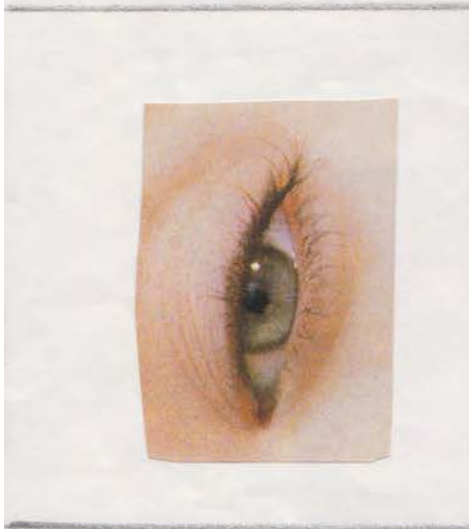
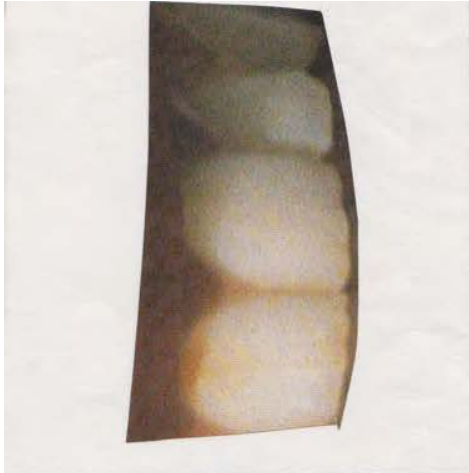


Etiquettes à découper, mettre dans une enveloppe, tirer à l'aveugle et placer sur les 2 feuilles de contrôle jusqu'à ce qu'un élève ait eu la chance de placer ses huit jetons sur sa feuille de schéma corporel et crie carton !

lèvre	joue	cil
bras	annulaire	doigt
nombril	talon	ventre
visage	dos	front
oeil	nuque	coude
ongle	oreille	nez
bras	bouche	cheville
cou	index	épaule
cuisse	ped	main
mollet	sourcil	genou
orteil	menton	
moustache	taille	
dent	poitrine	
poignet	cheveux	
fesse	pouce	





cheville

index

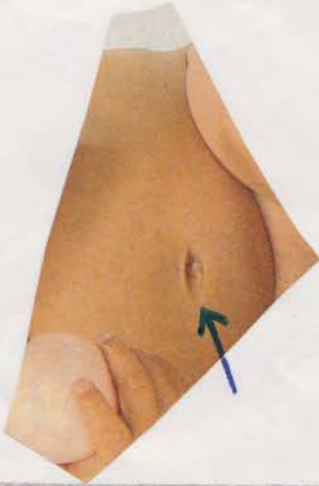
façon

u

moustache



falon

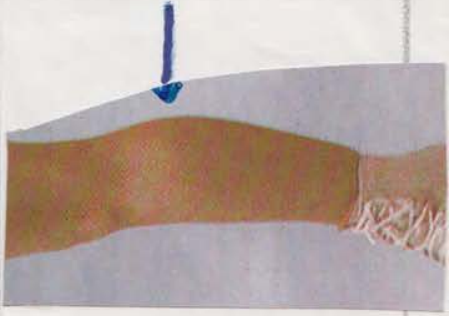


nuque

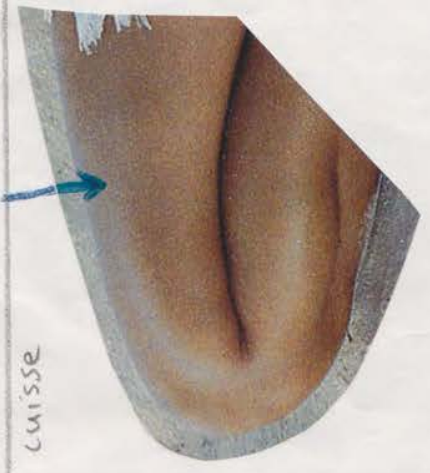




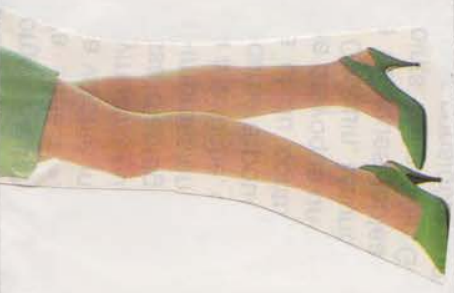
orteil



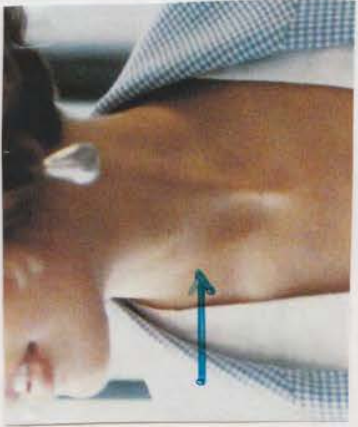
mollet



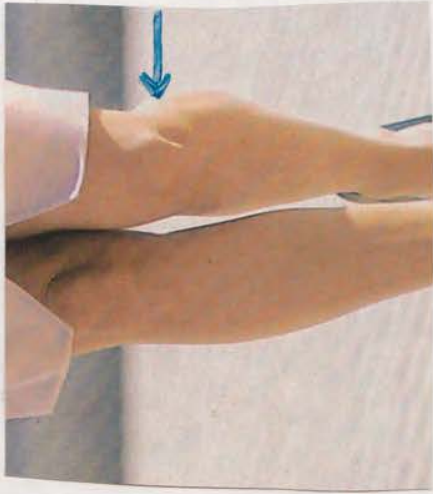
cuisse



cuisse



poitrine



illet

moustache



épaule



coude



joue



majeur



genou

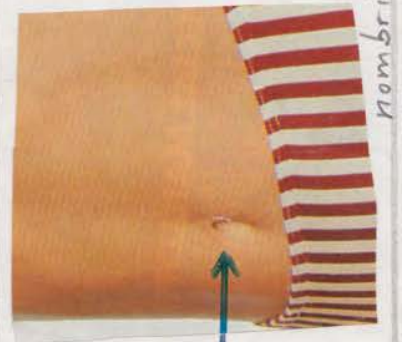


ventre





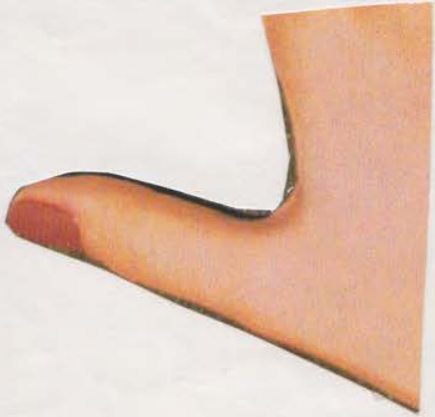
langue



ombilic

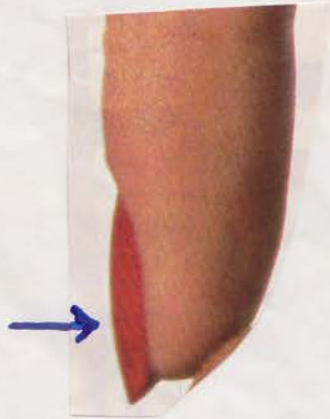
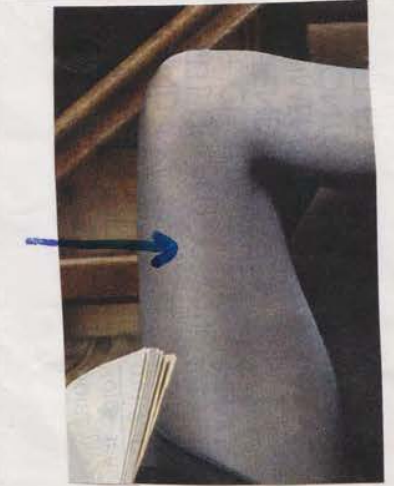


ventre



genou





front

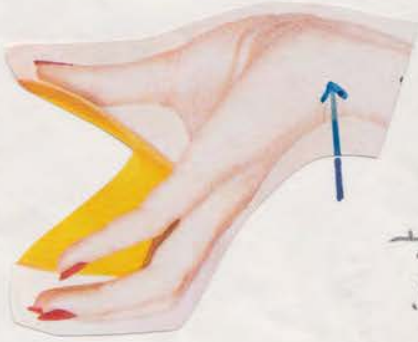


joue



annulaire

talon



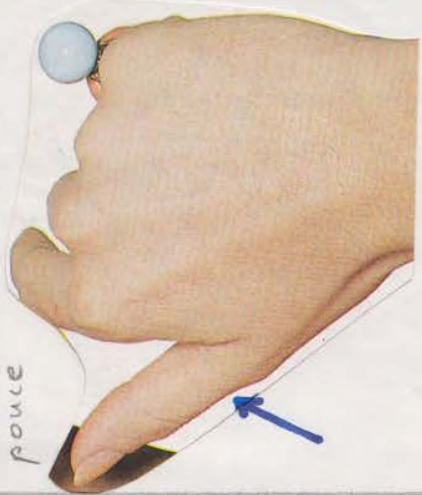
poignet

sourcil





cou



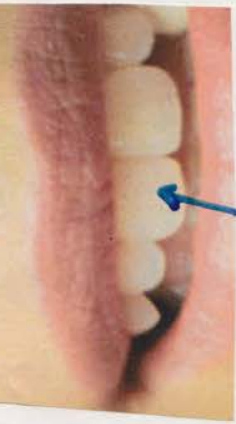
pouce



poitrine



poignet



nague



cheville



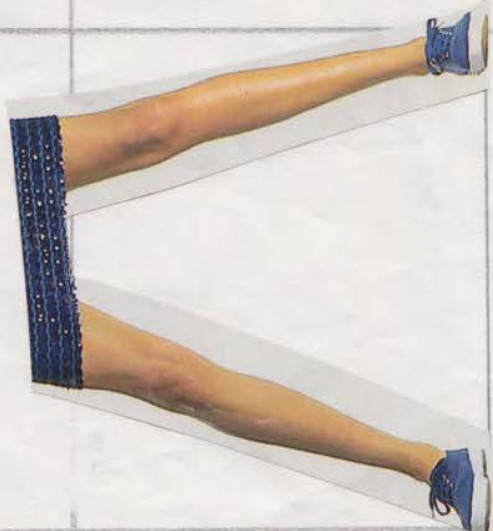
dos



pied



index



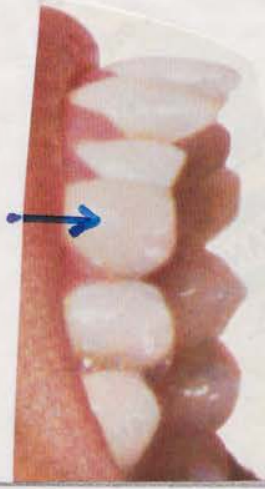
nez



nombriil



dent



moustache



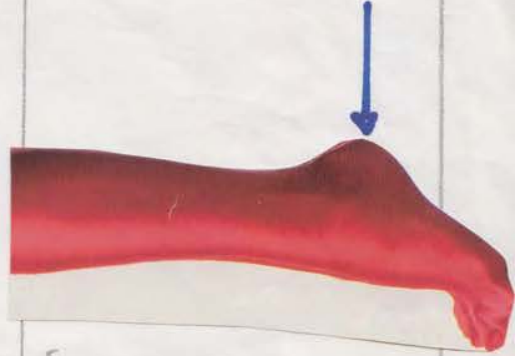
ventre



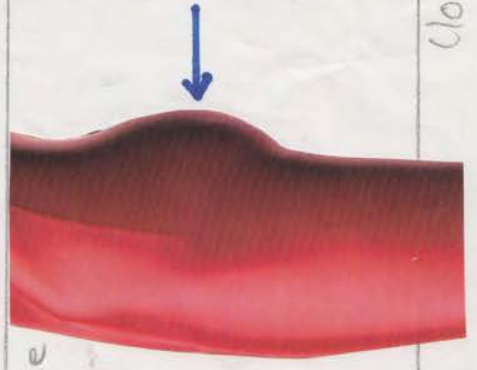
visage



talon



fesse



visage



oeil



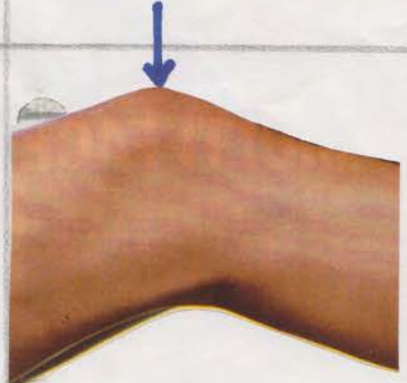
levre



front



genou



ongle



bras



épaule





Jambe



mollet



cuisse



orteil

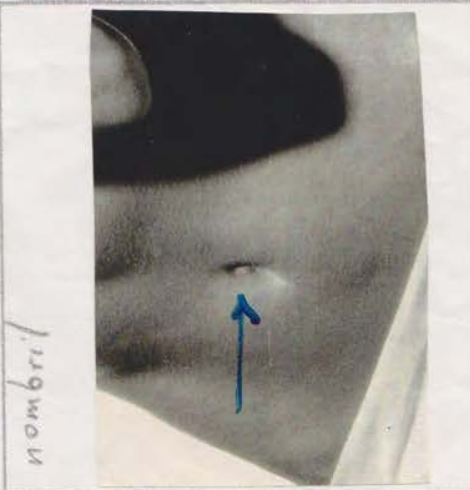


main

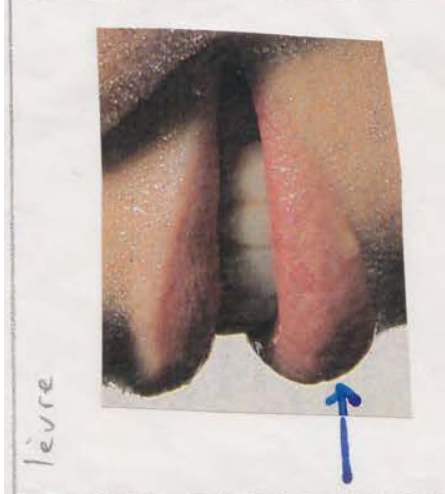




bras



ombilic



levre



majeur



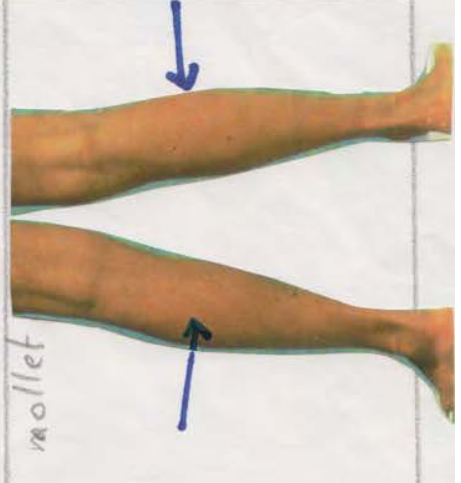
joue



doigt



coude



mollet

cil



nez



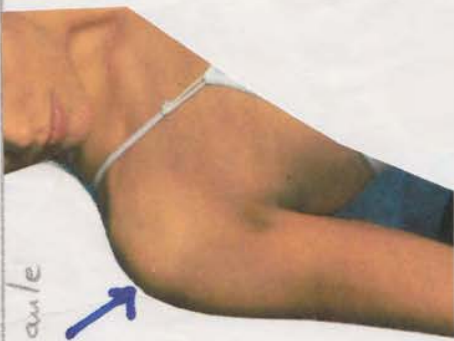
menton



auriculaire



épaule



cheville



genou



cheveux



cils



oreille



front



pouce



orteil



ventre



coude

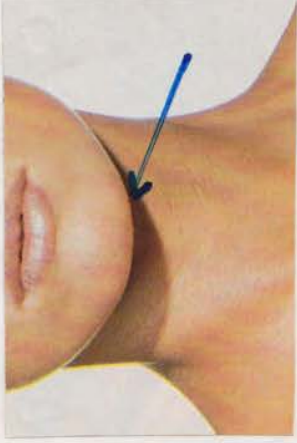


sourcil



110

menton



taille



piéd



cuisse

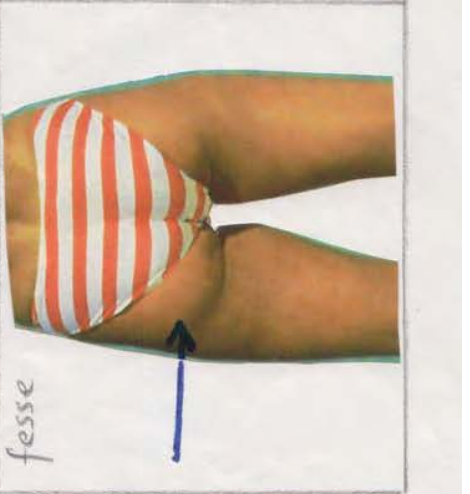
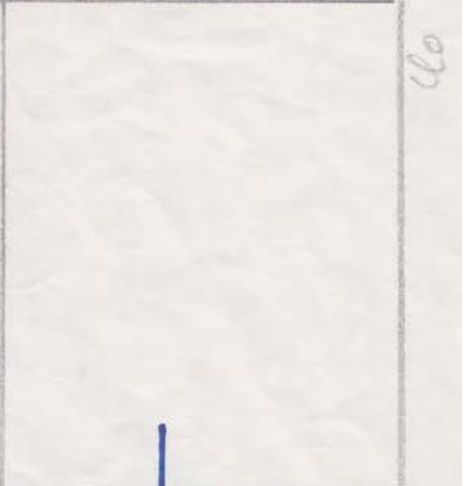
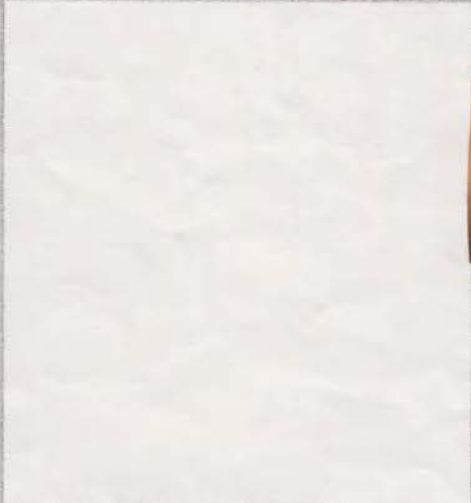
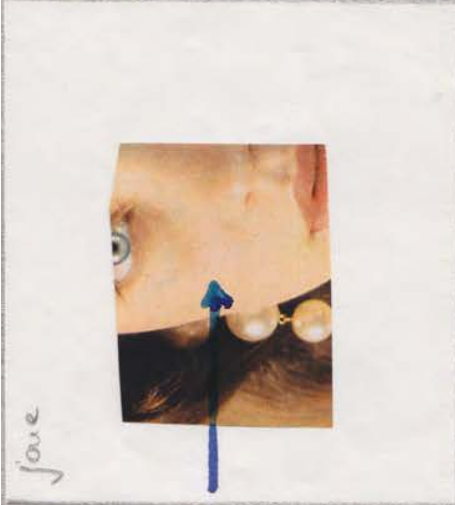


bouche



index





clo

<http://nourmoudunord.centerblog.net/>



